

# LUNCHTIME CLASSICS WITH THE SYDNEY SYMPHONY

13 FEBRUARY 2026

Summer Concerts at Sydney Town Hall



Government Partner

**CITY OF SYDNEY** 

“SYDNEY”  
“SYMPHONY”  
“ORCHESTRA”

**Emirates**

Principal Partner

# SYDNEY SYMPHONY ORCHESTRA

**PATRON** Her Excellency The Honourable Margaret Beazley AC KC

Founded in 1932 by the Australian Broadcasting Commission, the Sydney Symphony Orchestra has evolved into one of the world's finest orchestras as Sydney has become one of the world's great cities. Resident at the iconic Sydney Opera House, the Sydney Symphony Orchestra also performs in venues throughout Sydney and regional New South Wales, and international tours to Europe, Asia and the USA have earned the Orchestra worldwide recognition for artistic excellence.

The Sydney Symphony Orchestra's concerts encompass masterpieces from the classical repertoire, music by some of the finest living composers, and collaborations with guest artists from all genres, reflecting the Orchestra's versatility and diverse appeal. Its award-winning education program is central to its commitment to the future of live symphonic music, and the Orchestra promotes the work of Australian composers through performances, recordings and its commissioning program.

The Orchestra's first chief conductor was Sir Eugene Goossens, appointed in 1947; he was followed by Nicolai Malko, Dean Dixon, Moshe Atzmon, Willem van Otterloo, Louis Frémaux, Sir Charles Mackerras, Zdeněk Mácal, Stuart Challender, Edo de Waart and Gianluigi Gelmetti. Vladimir Ashkenazy was Principal Conductor from 2009 to 2013, followed by David Robertson as Chief Conductor from 2014 to 2019. Australian-born Simone Young commenced her role as Chief Conductor in 2022, a year in which the Orchestra made its return to a renewed Sydney Opera House Concert Hall.

## WHAT TO EXPECT IN THIS CONCERT

Expect to enjoy yourself! Maybe your heart will beat a little faster. Maybe your hair will stand on end. It's hard to predict or describe how the vast sound of a symphony orchestra will affect each of us. Just bring an open mind and engage with the music – close your eyes, watch the conductor and the musicians, or just sit back and let the music take you away.

### When do I clap?



Good question. Most pieces of music are broken up into different movements – usually, people only clap at the end of a piece, so there will be silent pauses between movements. On the next page you will see how many movements the pieces in this concert have, and the duration of each piece. But the simplest thing is to wait until the conductor turns around – or when everyone else starts applauding.

The conductor may leave the stage and come back on a few times, and acknowledge the different sections of the orchestra. You can keep clapping as long as you want to – and feel free to cheer and stomp your feet if you really enjoyed the concert!

### Can I take photos or videos?



You can take photos and videos on your phone during the applause at the end of a piece of music. **Please switch your phone to silent, make sure the flash is off and dim the brightness of your screen so you don't distract other audience members.** And if you share it to your socials, tag us in your posts! We love seeing what people have captured.

Please leave professional and semi-professional camera gear at home and limit yourself to a phone camera inside the venue.

## 2026 CONCERT SEASON

# LUNCHTIME CLASSICS WITH THE SYDNEY SYMPHONY

ONE HOUR OF CLASSICAL FAVOURITES

**Vanessa Hughes** presenter  
**James Judd** conductor

---

**JOHANN SEBASTIAN BACH** (1685–1750)  
orchestrated by **Joseph Twist**  
**Toccata and Fugue in D minor, BWV565**  
i. Toccata: Adagio (Improvvisato) – Allegro  
ii. Fugue: Moderato

**CAMILLE SAINT-SAËNS** (1835–1921)  
**Danse macabre, Op.40** (1874)

**JEAN SIBELIUS** (1865–1957)  
**Valse triste (Sad Waltz), Op.44 No.1** (1903)

**BERNARD HERRMANN** (1911–1975)  
**Psycho: A Short Suite for String Orchestra** (1960)  
i. Prelude  
ii. The Murder  
iii. Finale

**PAUL DUKAS** (1865–1935)  
**The Sorcerer's Apprentice** (1897)

**Friday 13 February, 12.30pm**  
Summer Concerts at Sydney  
Town Hall

---

### Estimated durations

Bach – 10 minutes  
Saint-Saëns – 8 minutes  
Sibelius – 7 minutes  
Herrmann – 7 minutes  
Dukas – 12 minutes

The concert will run for  
approx. 60 minutes,  
with no interval.

---

### Cover image

By Cassandra Hannagan

---

We acknowledge the Gadigal  
people of the Eora Nation,  
the traditional custodians of  
the land and water on which  
we work and perform. We pay  
our respects to their Elders  
past and present.

---

Government Partner

**CITY OF SYDNEY** 

**Emirates**

Principal Partner

# ABOUT THE PRESENTER

## **Vanessa Hughes** presenter

Vanessa Hughes is a broadcaster, presenting *ABC Classic Drive* on Australia's national classical music network.

She was raised on the music of the Czech masters, thanks to her grandmother's excellent record collection and fell in love with choral music after a visit to the local library resulted in her borrowing a rather exotic-looking disc of Palestrina masses. She has been a choir nerd ever since.

Having acquired a law degree, Vanessa decided it was useless and went into radio instead, where she has advocated for ethnic and gender diverse composers and a better funded Australian arts industry.

Vanessa sees a creatively bright and even commercially viable future for composers of all kinds. This philosophy underpins all her work at ABC Classic, where besides broadcasting established, hallowed music-makers, she believes it's her job to allow audiences to fall head over heels for composers they've never heard before.

In the last year, Vanessa has put to air the work of 1,138 composers who identify as women – many creating music right now and some of them composing a thousand years ago.

Before moving to ABC Classic, Vanessa worked at ABC Radio Sydney, producing the likes of Tony Delroy, Christine Anu and Sarah Macdonald.

In her spare time, Vanessa sings when she can in Inner West Voices, a strictly non-auditioned community choir based in Sydney and volunteers for the print-impaired at the Radio Reading Network of Australia.



Photo by Alex Vaughan

# ABOUT THE CONDUCTOR

## **James Judd** conductor

British conductor James Judd is internationally celebrated for his consummate musicianship, remarkable versatility and deep commitment to the orchestras and musicians with whom he shares the stage. Music Director of the Daejeon Philharmonic (South Korea) and Music Director Emeritus of the New Zealand Symphony, Judd's dynamic music making and exceptionally communicative style have made him a sought-after podium figure around the world, while return engagements attest to his gift for establishing inspiring and uniquely collaborative relationships.

Judd's partnership with the Daejeon Philharmonic has raised the orchestra's profile with a successful European tour in 2017 and critically acclaimed performances at the Seoul Art Center's Orchestra Festival.

As Music Director of the New Zealand Symphony Orchestra (NZSO) Judd brought the orchestra to a new level of visibility and international acclaim through appearances at the Sydney Olympic Arts Festival, the Auckland International Arts Festival, and the Osaka Festival of International Orchestras. Judd led the NZSO in its first tour of the major concert halls of Europe, ending with a debut appearance at the BBC Proms.

Judd is the recipient of two honorary doctorates and is a graduate of London's Trinity College of Music. He came to international attention as the assistant conductor of The Cleveland Orchestra, a post he accepted at the invitation of Lorin Maazel. Four years later, he returned to Europe after being appointed Associate Music Director of the European Community Youth Orchestra by Claudio Abbado.

In addition to Daejeon and New Zealand, Judd has held artistic leadership positions with the Slovak Philharmonic, Israel Symphony, Orchestre National de Lille and Adelaide Symphony. His fourteen-year tenure as Music Director of the Florida Philharmonic culminated in international recognition for their recordings of William Walton, Leonard Bernstein and Gustav Mahler.

As an opera conductor Judd has been a regular guest on the stages of the English National Opera, Wexford Festival and Glyndebourne Opera Festival, with productions of *Il trovatore*, *La traviata*, *Rigoletto*, *The Barber of Seville*, *Le nozze di Figaro* and *La Cenerentola*. As Artistic Director of the Florida Grand Opera he conducted productions of *Don Giovanni*, *Un ballo in maschera*, *La bohème*, *Madame Butterfly* and *The Turn of the Screw* as well as concert performances of *Tannhäuser*, *Fidelio* and *La clemenza di Tito*.

Considered one of the preeminent interpreters of British orchestral music, Judd's recording of Edward Elgar's Symphony No.1 with the Hallé Orchestra remains a highly regarded reference standard. He has amassed an extensive discography on the Naxos label, including an unprecedented number in partnership with the New Zealand Symphony Orchestra. Recordings of works by Elgar, Vaughan Williams, Beethoven, Bernstein, Copland and Gershwin received critical acclaim. A champion of the works of Gustav Mahler, Judd's recording of Mahler's Symphony No.1 with the FPO was awarded the Gold Medal by France's Diapason as well as the Toblacher Komponierhauschen for the best Mahler recording of the year. His orchestral recordings are also featured on the Decca, EMI and Philips labels.





# ABOUT THE MUSIC

**JOHANN SEBASTIAN BACH** (1685-1750)  
**orchestrated by Joe TWIST**  
**Toccata and Fugue in D minor, BWV565**

‘Of all the music of Bach this Toccata and Fugue...has a power and majesty that is cosmic...In the sequence of harmonies it is bold and path breaking...Its inspiration flows unendingly. In spirit it is universal so that it will always be contemporary and have a direct message for all men.’

Thus spoke the conductor Leopold Stokowski, who, in a time before the Early Music movement when few people outside of church music were aware of Bach, took it upon himself to popularise Bach’s music in orchestral transcriptions, the most popular of which is the D minor Toccata. Stokowski’s orchestration of the work revitalised Bach’s music in the mid-20th century, especially after he – and his arrangement – featured in Disney’s *Fantasia* in 1940.

The version you will hear today is arranged by Australian composer Joe Twist, who writes:

“This orchestral reimagining of Bach’s Toccata and Fugue in D minor is scored for a standard triple-wind symphony orchestra, transforming the iconic organ work into a vivid symphonic drama. Bright, incisive colours dominate the opening with mallet percussion, pizzicato strings and muted brass; adding rhythmic bite and theatrical impact.

Elsewhere the texture is deliberately pared back, particularly in the fugue, where solo winds present Bach’s four voices with clarity and restraint. As the fugue unfolds, the texture gradually accumulates momentum through added trills, expressive swells and the progressive addition of brass and percussion as the fugue leads to its heroic interrupted cadence in the relative major.

An alternative version includes organ, with selected orchestral passages marked ‘optional’ and played instead by the organ, effectively recasting the work as an organ concerto in which the soloist alternates between accompaniment, dialogue and virtuoso display.”

**Adapted from a note by David Vivian Russell**  
**Symphony Australia © 2000**



Composer Joe Twist. Photo © Pascal Haim.



Johann Sebastian Bach (aged 61) in a portrait by Elias Gottlob Haussmann.

# ABOUT THE MUSIC

**CAMILLE SAINT-SAËNS** (1835–1921)  
*Danse macabre*, Op.40 (1874)

One of Saint-Saëns' legacies was the introduction into France of Liszt's innovation, the symphonic poem or tone poem. Saint-Saëns' tone poems *Le Rouet d'Omphale* (Omphale's Spinning Wheel), *Phaëton*, *Danse macabre* and *La Jeunesse d'Hercule* (Hercules' Youth) were written in the period 1871–77. *Samson et Dalila*, Saint-Saëns' great opera, was completed in this same decade, and the Organ Symphony, Saint-Saëns' single enduring contribution to the symphonic tradition, was yet to come.

The premieres of Saint-Saëns' tone poems often prompted the claim that program music was somehow inferior to the absolute forms (such as symphony, sonata and concerto). But Saint-Saëns, in his *Harmonie et mélodie*, wrote, 'Is the music good or bad in itself? That is everything. Whether, after that, it has a program or not will make it neither better nor worse.'

Saint-Saëns' tone poems do not make the pretensions found in the programs of German efforts in this field, with their weighty narratives or 'deep' studies of character and events. Their programs are more poetic and evocative than anecdotal, and the picturesque element is subordinated to the balance of musical development. This brings the advantage of keeping the content within musical proportions. *Danse macabre* is indeed concise, but in subject matter the darkest of the four. It hails from the same grisly world as the mediaeval woodcuts of Death.

The tone poem was originally composed as a song: a setting of a poem by Henri Cazalis about Death playing his fiddle in a wintry churchyard at midnight while skeletons dance to his tune. Augusta Holmès bowled over the young Vincent d'Indy with her rendering, but other singers claimed the song was too difficult and Saint-Saëns turned the work into a piece for orchestra.

Its most remarkable feature is perhaps its orchestration. A solo violin tunes the E string down a semitone to set the ghostly scene; a xylophone clacks away in imitation of the rattling of bones. A parody of the *Dies irae*

melody, from the Latin mass for the dead, reinforces the gloom amidst the grotesquerie.

Saint-Saëns' reputation has been eclipsed in recent years. Those who consider him irrelevant to the mainstream of music remember that he lived into the era of Debussy, Stravinsky and Schoenberg, but forget he had his musical grounding in the days of Gounod. He was on visiting terms with Berlioz (who recognised his precocious gifts). Saint-Saëns' originality may not be shouted from the rooftops, but his symphonic poems are nevertheless a unique achievement within the French orchestral tradition. The music is exceptionally well-crafted and proportioned, and the scoring earned Saint-Saëns the praise of a peer: having completed a piano transcription, Liszt said to the composer: '... please forgive my inability to reproduce on the piano its marvellous orchestral colour.'

**Gordon Kalton Williams**  
**Symphony Australia © 1994**



Photograph of Camille Saint-Saëns circa 1880 by Charles Reutlinger (1816–81). Source: Bibliothèque nationale de France.

# ABOUT THE MUSIC

**JEAN SIBELIUS** (1865–1957)

***Valse triste* (Sad Waltz), Op.44 No.1** (1903)

It's not quite enough to say that Sibelius lived at a time when many notable composers – Elgar, Fauré and Richard Strauss among them – wrote incidental music for the theatre. Many major theatres supported permanent orchestras in the decades around the turn of the 20th century; live incidental music on this scale became increasingly untenable as sound films and, later, television, took hold.

Yet Scandinavia was something of a special case in the years of Sibelius' working life, for the theatre was a particularly important forum for new ideas about the nature of drama; the play of emotions, the delineation of character and the structure of theatrical narrative were all undergoing significant change. The work of Ibsen, Strindberg and Bjørnson tell us something of this vitality, as does the pervasiveness of the symbolist movement. Maeterlinck's work was performed in translation, and such Finnish painters as Magnus Enckell and Axel Gallén were prominent symbolists.

A case in point, in theatrical terms, is *Kuolema* (Death) by Sibelius' brother-in-law Arvid Järnfeldt. It tells of the life of a virtuous man, Paavali, in episodes ranging from the death of his mother through to his marriage, his family life, his charitable deeds and, finally, his passing. Sibelius worked on the *Kuolema* music in the Northern autumn of 1903, and the play was staged for the first time in December of that year in the Finnish National Theatre, Helsinki.

He wrote six numbers in all and, when the play was revised for a 1911 staging, created two further pieces. But unlike his earlier music for the play *King Christian II*, or his later work for *Pelleas and Melisande* and *The Tempest*, he did not make a concert suite out of the *Kuolema* music.

He did, however, extract some music from the score for independent performance. In the play, a crane brings a baby to Paavali and his wife Elsa. Sibelius used the music from this section for his concert piece *Scene With Cranes*, which he created in 1906; but not long after *Kuolema* was first performed, he re-scored and re-shaped the play's very first number into a piece that would cross almost all the musical boundaries of the day, making its presence felt in concert halls, tea shops and dance palaces all over the Western world.

In *Kuolema*'s first scene, Paavali is at the bedside of his dying mother. She tells him that she has dreamed she has gone to a ball. Then, as Paavali falls asleep during his vigil, death comes to his mother; she mistakes him for her late husband, and dances with him. When Paavali awakens, his mother is dead.

The music which accompanies this scene is marked simply 'Temp di valse lente'. In modifying it to become *Valse Triste*, Sibelius joined together the two sections which, in the play, are broken by the mother's leaning, exhausted, against the wall, while the other phantom dancers withdraw from the scene. He also created a new, gentler ending and streamlined the accompaniment to the main theme.

Along with two other works which originated as music to accompany theatrical performance, the *Karelia Suite* and *Finlandia*, *Valse Triste* is among Sibelius' most popular creations. Arguably, when cinemas had orchestras, and tea shops and radio stations had light music ensembles, it was his most widely played. *Valse Triste*'s air of gentle melancholy seems resilient to the many instrumental combinations for which the piece has been scored.

Ironically, Sibelius sold the rights to *Valse Triste* outright to its publisher and was never paid any royalties for it. He would write many pieces of light music subsequently, but none that achieved its pervasive popularity.

© Phillip Sametz



A photo of Sibelius c. 1900, taken by Daniel Nyblin. Source: Finnish Heritage Agency.



# ABOUT THE MUSIC

**BERNARD HERRMANN** (1911–1975)  
*Psycho: A Short Suite for String Orchestra*  
(1960)

By the time he was asked to supply music for *Psycho*, Bernard Herrmann was already known as ‘Hitch’s composer’. And yet that association was based only on a handful of films, beginning with *The Trouble with Harry* (1955) and continuing through to the glossy *Vertigo* (1958) and *North by Northwest* (1959). Although Herrmann had produced music for a string of notable directors – Orson Welles, Robert Wise and Henry King, and, post-Hitch, François Truffaut, Brian de Palma and Martin Scorsese – he will doubtless forever be remembered as the composer of five of the film masterpieces of Alfred Hitchcock, his ‘house-composer’ from 1955 to 1966.

What sets Herrmann’s music for *Psycho* apart from their other collaborations is a single, almost revolutionary concept: in choosing to write for strings alone, Herrmann dispensed with the composer’s conventional massive arsenal for scoring horror films, and frustrated audiences expecting string music to produce romance. In an interview given in 1971, Herrmann explained that he felt he could better complement Hitchcock’s black-and-white photography by creating ‘a black-and-white sound’.

For his subsequent concert piece, which he called *Psycho: A Short Suite for String Orchestra*, Herrmann compressed his 47 minutes of 60 cues into a seven-minute suite of three sections, highlighting the construction of the music along almost Schoenbergian lines of fragments of melodies and hints of harmony that are recycled throughout.

With *Psycho*’s nightmarish themes of corruptibility, voyeurism, transvestism, implied incest and necrophilia, Hitchcock created a cornucopia of horror techniques, emulated and spoofed by countless directors over the ensuing half-century. There is even a Bugs Bunny cartoon, *Looney Tunes: Back in Action* (2003) wherein Bugs empties a can of chocolate syrup down the drain. With *Psycho*, Hitchcock had produced his first real horror film, and would be viewed as the master of the genre for posterity.

At early screenings of *Psycho*, Hitchcock insisted that the theatre doors be locked, a Barnum-esque decree enforced by uniformed

security guards. The audience was led to expect unspeakable horror in the film’s first few minutes. In fact, *Psycho* contains violence in only two of its 109 minutes; the audience itself creates the expectation of violence and horror.

The most stunning moment occurs about one-third of the way through, when Janet Leigh’s character is dispatched in the (in) famous ‘shower scene’. Hitchcock had originally intended to film this scene without music, but Bernard Herrmann urged him to utilize the ‘bird-shriek’ sounds produced by rapid upward string glissandi, a technique created by Penderecki in his ‘Study of String Sonorities’ subsequently re-titled *Threnody for the Victims of Hiroshima* (1960). It is unlikely that Herrmann was aware of Penderecki’s new musical language; the crusty American had invented a moment of ‘terror’ – to use his pithy description – that is now part of film history.

Again, the master composer had prevailed. ‘Hitchcock finishes a picture 60%,’ Bernard Herrmann once said. ‘I have to finish it for him.’

*Psycho* was nominated – unsuccessfully – for four Academy Awards, but Herrmann’s score was not among these nominations. The Academy Award for a Musical Score in a Motion Picture for the year 1960 went to Ernest Gold for *Exodus*.

**Vincent Plush © 2005**



Bernard Herrmann c.1970. Source: *Arlington Heights Herald*, Illinois/ Wikimedia Commons.

# ABOUT THE MUSIC

**PAUL DUKAS** (1865–1935)  
***The Sorcerer's Apprentice*** (1897)

Written in 1897, Dukas' scherzo is based on Goethe's ballad of the same name (in German, *Der Zauberlehrling*), which in turn is derived from a work of the ancient Greek satirist Lucian, *The Lie Fancier*, in which the character Eucrates relates some of his experiences as an apprentice to the magician Pancrates, who has lived in a cave for 23 years, all the while taking instructions in magic from the goddess Isis.

A précis of Goethe's version of the tale prefaces some editions of the score:

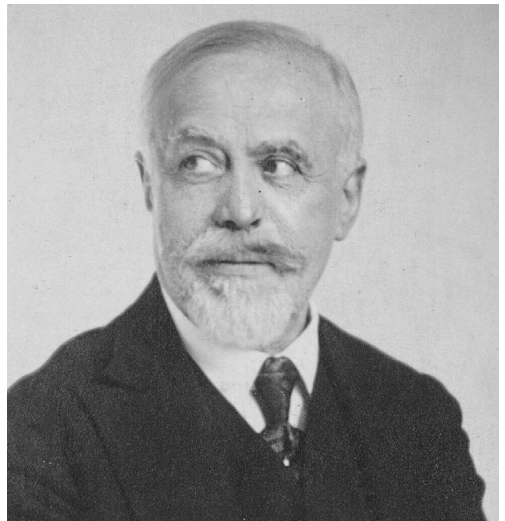
*The Sorcerer's Apprentice* tells of a magician who can transform a broomstick into an animate being and have it perform all his menial tasks for him. The magician's apprentice one day overhears the magic formula with which the broomstick becomes alive and tries to apply it himself in his master's absence. The broom is ordered to bring water from the well. It performs this routine mechanically and efficiently. When the apprentice tires of this game, he wants to transform the water carrier back into a broomstick, but finds that he does not know the necessary formula. The enchanted stick continues to bring in bucket upon bucket of water until the room overflows. The apprentice passes from annoyance to despair. Fortunately, the sorcerer comes home, pronounces the magic words, the broom becomes inanimate, and all is quiet again.

In all his music Dukas is a composer who cares deeply about the integrity of structure, and in *The Sorcerer's Apprentice* he manages to write a formal scherzo and still, with exactness, follow the story of Goethe's narrative. With the first theme we hear – announced softly by the violins – we seem to be present as the apprentice utters his incantations, while with the second (given to the clarinet, then oboe, then flute) we meet the dormant broom, before it begins its spooky activity. These two themes dominate the work, and in various ingenious guises chart our progress through the story. The true musical climax appears at the point where the desperate apprentice believes he has transformed the broom back to its inactive state once again, after which the 'broom' theme scampers about in an even

more feverish manner than it has previously, until the sorcerer returns and summons an imperious calm.

*The Sorcerer's Apprentice* was already quite well known in the concert hall before Leopold Stokowski conducted it in Walt Disney's animated film *Fantasia* (1940), and after this it attained a popularity that could not (it seems) be divorced from the image of Mickey Mouse as the apprentice the Disney team had created. The work responded so well to such treatment because of its lucidity and thematic memorability. For all their many beauties, none of Dukas' other pieces seek the immediacy of appeal *The Sorcerer's Apprentice* attains, and in none does Dukas seek to be illustrative in so open-hearted a fashion.

© Phillip Sametz



Paul Dukas

## FROM THE ARCHIVES



The Sydney Symphony Orchestra performs at Sydney Town Hall in 1944, led by the great Hungarian-born American conductor Eugene Ormandy.

## THE SYDNEY SYMPHONY AT THE TOWN HALL

Built in 1889, Sydney Town Hall was the Sydney Symphony Orchestra's main performance venue from its establishment in 1932 until the opening of the Sydney Opera House in 1973.

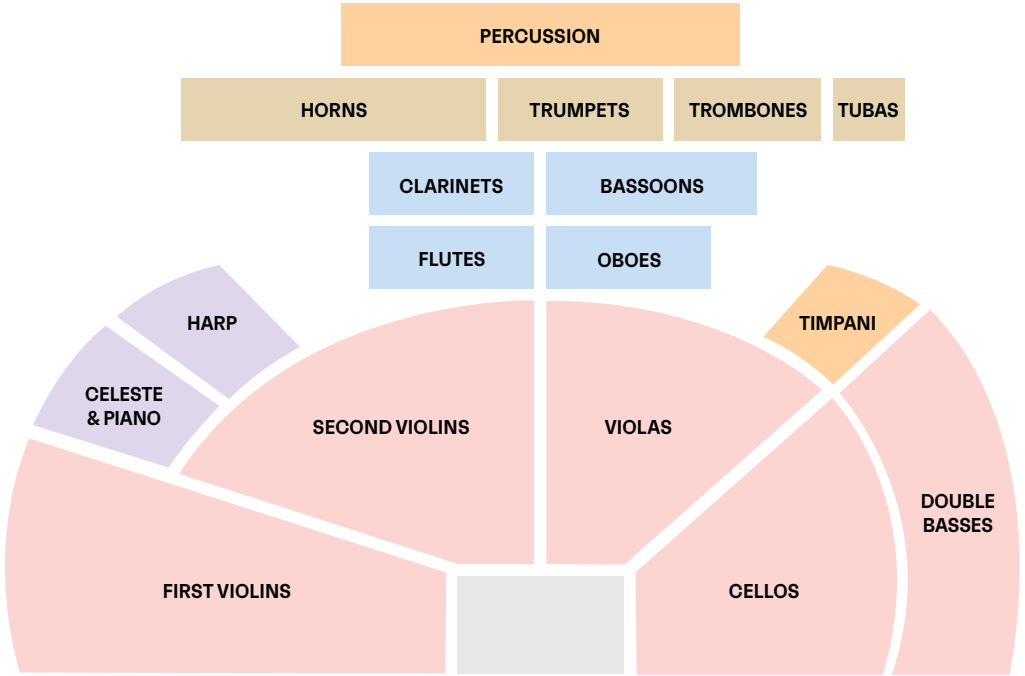
As the centre of Sydney's cultural and civic life, it was only fitting that it should serve as the home for the city's orchestra, and over our first 40 years it saw countless performances by some of the world's greatest artists. The period immediately following World War II was especially memorable: with many great music cities in Europe damaged and recovering, a months-long tour of laid-back, sunny Australia was especially appealing.

Perhaps the best-known musical event to be held at Town Hall were the Promenade concerts – known as 'the Proms' – which ran from 1965-1977. The brain child of conductor and educator John Hopkins, the Proms were a revolution in Australian classical music; every ticket was the same price, the chairs were removed from the hall with audiences encouraged to bring bean bags, and the music presented was deliberately eclectic with traditional classical repertoire presented alongside brand-new contemporary works that pushed the envelope in many ways.

More than anything, the Proms democratized music in Sydney, and made classical concerts more welcoming and accessible than ever before, encouraging younger and more diverse audiences.

The spirit of the Proms lives on in today's concert: through the venue of course, and through the choice of music – short, fun, accessible works that we hope will inspire a love of orchestral music in everyone who hears them.

# SYDNEY SYMPHONY ORCHESTRA



## PERFORMING IN THIS CONCERT

### FIRST VIOLINS

**Harry Bennetts**  
*Associate Concertmaster*  
**Alexandra Osborne**  
*Associate Concertmaster*  
**Fiona Ziegler**  
*Assistant Concertmaster*  
Jennifer Booth  
Sophie Cole  
Claire Herrick  
Georges Lentz  
Alex Mitchell  
Alexander Norton  
Leone Ziegler  
Brian Hong<sup>°</sup>  
Benjamin Tjoo<sup>°</sup>  
Liam Pilgrim<sup>†</sup>  
Marcus Michelsen<sup>\*</sup>

### SECOND VIOLINS

**Lerida Delbridge**  
*Principal*  
**Kirsty Hilton**  
*Principal*  
**Marina Marsden**  
*Principal*  
**Emma Jezek**  
*Acting Associate Principal*  
Alice Bartsch  
Victoria Bihun  
Rebecca Gill  
Emma Hayes  
Shuti Huang  
Benjamin Li  
Robert Smith  
Maja Verunica

### VIOLAS

**Tobias Breider**  
*Principal*  
**Richard Waters**  
*Principal*  
Sandro Costantino  
Rosemary Curtin  
Stuart Johnson  
Justine Marsden  
Felicity Tsai  
Amanda Verner  
Sebastian Coyne<sup>†</sup>

### CELLOS

**Simon Cobcroft**  
*Associate Principal*  
**Leah Lynn**  
*Assistant Principal*  
Kristy Conrau  
Fenella Gill  
Timothy Nankervis  
Elizabeth Neville  
Christopher Pidcock  
Adrian Wallis

### DOUBLE BASSES

**David Campbell**  
*Acting Principal*  
Dylan Holly  
Steven Larson  
Richard Lynn  
Jaon Pallandi  
Benjamin Ward

### FLUTES

**Emma Sholl**  
*Principal*  
Carolyn Harris  
**Katlijn Sergeant**  
*Principal Piccolo*

### OBOES

**Shefali Pryor**  
*Principal*  
**Callum Hogan**  
*Acting Associate Principal*  
**Alexandre Oguey**  
*Principal Cor Anglais*

### CLARINETS

**Olli Leppäniemi**  
*Principal*  
Christopher Tingay  
**Alexander Morris**  
*Principal Bass Clarinet*

### BASSOONS

**Todd Gibson-Cornish**  
*Principal*  
Fiona McNamara  
Jay Lee<sup>†</sup>  
**Noriko Shimada**  
*Principal Contrabassoon*

### HORNS

**Samuel Jacobs**  
*Principal*  
**Euan Harvey**  
*Acting Principal 3rd Horn*  
Marnie Sebire  
Rachel Silver  
Emily Miers<sup>°</sup>

### TRUMPETS

**Brent Grapes**  
*Associate Principal*  
Cécile Glémot  
Anthony Heinrichs  
Sophie Kukulies<sup>†</sup>

### TROMBONES

**Nick Byrne**  
*Acting Associate Principal*  
Jeremy Mazurek<sup>°</sup>  
Harrison Steele-Holmes<sup>†</sup>  
**Christopher Harris**  
*Principal Bass Trombone*

### TUBA

**Steven Rossé**  
*Principal*

### TIMPANI

**Antoine Siguré**  
*Principal*

### PERCUSSION

**Mark Robinson**  
*Acting Principal*  
Timothy Constable  
Leah Columbine<sup>†</sup>  
Alice Zhang<sup>\*</sup>

### HARP

**Louisic Dulbecco**  
*Principal*

### Bold Principal

<sup>\*</sup> Guest Musician  
<sup>°</sup> Contract Musician  
<sup>†</sup> Sydney Symphony Fellow



# SYDNEY SYMPHONY ORCHESTRA

## ARTISTIC LEADERSHIP



**Simone Young** AM  
Chief Conductor



**Donald Runnicles**  
Principal Guest Conductor



**Benjamin Northey**  
Conductor in Residence



**Vladimir Ashkenazy**  
Conductor Laureate



**Andrew Haveron**  
Concertmaster  
*Vicki Olsson Chair*

## FIRST VIOLINS



**Harry Bennetts**  
Associate  
Concertmaster  
*Judy & Sam Weiss  
Chair*



**Alexandra  
Osborne**  
Associate  
Concertmaster  
*Helen Lynch AM &  
Helen Bauer Chair*



**Fiona Ziegler**  
Assistant  
Concertmaster  
*Webb Family Chair,  
in memory of Dr Bill  
Webb & Helen Webb*



**Sun Yi**  
Associate  
Concertmaster  
Emeritus



**Jenny Booth**



**Sophie Cole**



**Sercan Danis**



**Claire Herrick**  
*Russell & Mary  
McMurray Chair*



**Georges Lentz**



**Emily Long**



**Alexandra  
Mitchell**



**Alexander  
Norton**



**Léone Ziegler**

## SECOND VIOLINS



**Lerida Delbridge**  
Principal



**Kirsty Hilton**  
Principal



**Marina Marsden**  
Principal Emeritus



**Emma Jezek**  
Assistant Principal



**Alice Bartsch**



**Victoria Bihun**



**Rebecca Gill**  
*Dr John Lam-Po-Tang  
Chair, in memory  
of Reg & Jeannette  
Lam-Po-Tang*



**Emma Hayes**



**Shutí Huang**



**Monique Irik**



**Wendy Kong**



**Benjamin Li**



**Nicole Masters**  
*Nora Goodridge OAM  
Chair*



**Robert Smith**



**Maja Verunica**

VIOLAS



**Tobias Breider**  
Principal  
*Roslyn Packer AC  
& Gretel Packer AM  
Chair*



**Richard Waters**  
Principal



**Justin Williams**  
Assistant Principal  
*Bob & Julie Clampett  
Chair, in memory of  
Carolyn Clampett*



**Anne-Louise  
Comerford**  
Associate Principal  
Emeritus  
*White Family Chair*



**Sandro  
Costantino**



**Rosemary  
Curtin**  
*John & Jane  
Morschel Chair*



**Stuart Johnson**



**Justine Marsden**



**Felicity Tsai**



**Amanda Verner**



**Leonid Volovelsky**

CELLOS



**Catherine Hewgill**  
Principal  
*Jacqui & John  
Conde AO Chair*



**Simon Cobcroft**  
Associate Principal



**Leah Lynn**  
Assistant Principal



**Kristy Conrau**  
*Deborah Anne  
Jones Chair*



**Fenella Gill**



**Timothy  
Nankervis**



**Elizabeth Neville**



**Christopher  
Pidcock**



**Adrian Wallis**

DOUBLE BASSES



**Kees Boersma**  
Principal  
*Brian Abel Chair*



**Alex Henery**  
Principal



**David Campbell**



**Dylan Holly**



**Steven Larson**



**Richard Lynn**



**Jaan Pallandi**



**Benjamin Ward**

FLUTES



**Emma Sholl**  
Associate Principal  
*Robert Constable  
& Family Chair*



**Carolyn Harris**  
*Landa Family Chair,  
in memory of  
Dr Barry Landa*



**Katlijn Sergeant**  
Principal

PICCOLO



**Shefali Pryor**  
Principal  
*Council Chair*

OBOES



**Callum Hogan**

COR ANGLAIS



**Alexandre Oguey**  
Principal  
*Dr Rebecca Chin  
& Family Chair*

CLARINETS



**Olli Leppäniemi**  
Principal



**Francesco Celata**  
Associate Principal  
*John Curtis AM Chair*



**Christopher  
Tingay**



**Alexander Morris**  
Principal

BASS CLARINET

BASSOONS



**Todd  
Gibson-Cornish**  
Principal  
*Nelson Meers  
Foundation Chair*



**Matthew Wilkie**  
Principal Emeritus  
*Nelson Meers  
Foundation Chair*



**Fiona McNamara**  
*Nelson Meers  
Foundation Chair*



**Noriko Shimada**  
Principal

CONTRABASSOON

HORNS



**Samuel Jacobs**  
Principal  
*Terrey Arcus AM Chair*



**Euan Harvey**



**Marnie Sebire**  
*Judge Robyn Tupman  
Chair*



**Rachel Silver**  
*Sue Milliken AO Chair*

TRUMPETS



**David Elton**  
Principal  
*Anne Arcus Chair*



**Brent Grapes**  
Associate Principal



**Cécile Glémot**



**Anthony  
Heinrichs**

TROMBONES



**Scott Kinmont**  
Associate Principal  
*Audrey Blunden  
Chair*



**Nick Byrne**  
*Tim Robertson SC  
& Francesca Delano  
Davis Chair*



**Christopher  
Harris**  
Principal



**Steve Rossé**  
Principal

BASS TROMBONE TUBA

TIMPANI



**Antoine Siguré**  
Principal



**Mark Robinson**  
Associate Principal/  
Section Percussion

PERCUSSION



**Rebecca Lagos**  
Principal  
*I Kallinikos Chair*



**Timothy  
Constable**  
*Christine Bishop  
Chair*

HARP



**Louisic  
Dulbecco**  
Principal

# THANK YOU

We gratefully acknowledge the support of all our donors, including those who wish to remain anonymous.

For a full listing of our Sydney Symphony family of donors, please visit [sydneyssymphony.com/our-supporters](http://sydneyssymphony.com/our-supporters).

## VISIONARIES

Brian Abel  
Geoff Ainsworth <sup>AM</sup>  
& Johanna Featherstone  
The Berg Family Foundation  
Robert Constable & Family  
Jenny Dines Charitable Trust  
Dr Richard Henry <sup>AM</sup>  
& the late Dr Rachel Oberon  
Dr Gary Holmes  
& Dr Anne Reeckmann  
Helen Lynch <sup>AM</sup> & Helen Bauer  
Bob Magid <sup>OAM</sup> & Ruth Magid  
Vicki Olsson  
Roslyn Packer <sup>AC</sup>  
Packer Family Foundation  
Patricia H Reid  
Endowment Pty Ltd  
Paul Salteri <sup>AO</sup> & Sandra Salteri  
Doris Weiss & the late  
Peter Weiss <sup>AO</sup>  
Judy & Sam Weiss  
Wilson Foundation

## MAESTROS

Antoinette Albert  
Terrey Arcus <sup>AM</sup> & Anne Arcus  
Christine Bishop  
Dugald & Janet Black  
Professor Ina Bornkessel-  
Schlesewsky & Professor  
Matthias Schlewsky  
In memory of Rosemary Cahill  
Dr Rebecca Chin  
John C Conde <sup>AO</sup>  
Heather & Malcolm Crompton  
F & K De Angeli Foundation  
Ian Dickson <sup>AM</sup> & Reg Holloway  
Edward & Diane Federman  
Nora Goodridge <sup>OAM</sup>  
Paolo Hooke & Fan Guo  
Ingrid Kaiser

I Kallinikos  
Dr Rachael Kohn <sup>AO</sup> & Tom Breen  
Dr John Lam-Po-Tang  
Olive Lawson  
Sharon & Anthony Lee  
In memory of Jane Mathews <sup>AO</sup>  
Catriona Morgan-Hunn  
Nelson Meers Foundation  
A/Prof Keith Ong  
& Dr Eileen Ong  
In memory of Mrs W Stening  
Judge Robyn Tupman  
In memory of Dr Bill Webb  
& Helen Webb  
Kathy White  
Caroline Wilkinson <sup>OAM</sup>  
Ray Wilson <sup>OAM</sup>, in memory  
of James Agapitos <sup>OAM</sup>  
June & Alan Woods  
Family Bequest

## PATRONS \$10,000+

Ainsworth Foundation  
Colin & Richard Adams  
The Estate of the late  
Henri Walter Aram <sup>OAM</sup>  
Stephen J Bell  
Audrey Blunden  
Peter Braithwaite  
& Gary Linnane  
Hon JC Campbell <sup>KC</sup>  
& Mrs Campbell  
Chocketts Family  
J Cheung  
Bob & Julie Clampett  
B & M Coles  
Howard & Maureen Connors  
John Curtis <sup>AM</sup> & Anna Curtis  
The Hon Ashley Dawson-  
Damer <sup>AM</sup>  
Susie Dickson  
Suellen & Ron Enestrom  
The Estate of the late  
Jennifer Phyllis Fulton  
Carolyn Githens  
Dr Bruno & Rhonda Giuffre  
The Hilmer Family Endowment  
Jim & Kim Jobson  
Brian Jones, in memory  
of Deborah Anne Jones

Andrew Kaldor <sup>AM</sup>  
& Renata Kaldor <sup>AO</sup>  
Justice Francois Kunc  
& Felicity Rourke  
Roland Lee  
The Estate of the late  
Daniel-Francois Jean Lemesle  
Warren & Marianne Lesnie  
Dr Lee MacCormick Edwards  
Charitable Foundation  
Susan Maple-Brown <sup>AM</sup>  
Wendy McCarthy <sup>AC</sup>  
Robert McDougall <sup>KC</sup>  
Russell & Mary McMurray  
Sue Milliken <sup>AO</sup>  
The Estate of the late  
Gordon Mills  
Jane & John Morschel  
Dr Dominic Pak & Cecilia Tsai  
The Estate of the late  
Colin Price  
Nigel & Carol Price  
Tim Robertson SC  
& Francesca Delano Davis  
In memory of Fiona Roden  
The Ross Trust  
Tony Schlosser  
Penelope Seidler <sup>AM</sup>  
Sylvie C Sloane  
Alison Smith & Brett Murrphy,  
in memory of Ann Smith  
Elizabeth & Dougall Squair  
James Stening  
Tony Strachan  
Dominic Taranto  
& Anthony Cassidy  
Kevin J Troy  
Yim Family Foundation

## SUPPORTERS \$5,000+

Peter Arthur  
Dr Richard Balanson  
& Dawn Talbot  
David Barnes  
Doug & Alison Battersby  
Dr Victor Bien  
& Silvana d'Iapico  
Minnie Biggs  
Beverley & Phil Birnbaum



# THANK YOU

Judith Bloxham  
In memory of Rosemary Boyle  
(Music Teacher)  
Roslynne Bracher AM  
Maggie Brown  
Miguel Carrasco  
& Renee Martin  
Margot Chinneck  
Joan Connery OAM  
Elizabeth Conti  
Rae Cottle  
Mary Anne Cronin  
Ewen Crouch AM  
& Catherine Crouch OAM  
Christine Davis  
de Soysa Foundation  
Donus Australia  
Foundation Limited  
Emeritus Professor  
Jenny Edwards  
Sarah & Tony Falzarano  
Freilich Family Foundation  
Leonie & James Furber  
Anne Galbraith  
Dr Greg Gard  
& Dr Joanne Grimsdale  
The Greatorex Fund  
Denys & Jennifer Gillespie  
Dr Colin Goldschmidt  
& Gillian Kelsey  
Dr Jan Grose OAM  
In memory of Michael Hamar  
Richard Hansford  
Jill Hickson AM  
James & Yvonne Hochroth  
The Estate of the late  
Beryl Margaret Jamieson  
Stephen Johns  
& Michele Bender  
Karin Keighley  
Anna-Lisa Klettenberg  
Levins Family Foundation  
John & Sophia Mar  
Dr Mahidi Mardini  
Dr V Jean McPherson  
The Hon. AJ Meagher  
& Fran Meagher  
Helen Meddings & the late  
Phil Meddings  
In memory of  
Kevin Morris & Des McNally

Jackie O'Brien  
Tom & Ruth O'Dea  
Andrew Patterson  
& Steven Bardy  
Ian Robert Peters  
Suzanne Rea  
& Graham Stewart  
Dr Wendy Roberts  
Chris Robertson & Kate Shaw  
Sylvia Rosenblum  
Prof Vladan Starcevic  
Geoff Stearn  
Dr Vera Stoermer  
Chiraag & Drishti Tolani  
Russell Van Howe  
& Simon Beets  
Geoff & Alison Wilson  
**SUPPORTERS \$2,500+**  
Juliet & Nick Andrews  
Michael Ball  
Maureen & William Barnard  
Irene & Robert Bonella  
Stephen Booth  
Bill Brooks & Alasdair Beck  
In memory of RW Burley  
Louise Burney  
Sandra & Neil Burns  
Jennifer Burton  
Bronwyn & Tony Carroll  
Cecily Cathels  
Terry & Julie Clarke  
Dr Paul Collett  
Vanessa Cragg & the late  
Ronald D Cragg OAM  
Debby Cramer  
Rosemary Curtin  
Katarina Cvitkovic  
Vladimir & Rachel Debelak  
Susan & Roger Doenau  
Camron Dyer & Richard Mason  
John Favaloro  
Barbara Knox Fogarty  
Diane Gallery  
AM Gregg & DM Whittleston  
Louise Hamshere  
Dr Joanne Hart & Adam Elder  
Alan Hauserman & Janet Nash

Roger Hudson  
& Claudia Rossi-Hudson  
In memory of Joan Johns  
Dr Owen Jones  
& Vivienne Goldschmidt  
Terry & Helen Jones  
Prof Bruce King  
Pamela King  
Professor Andrew Korda AM  
& Susan Pearson  
A/Prof Winston Liauw  
& Ellen Liauw  
Dr Carolyn Lowry OAM  
& Peter Lowry AM  
Elaine MacDonald  
Geoffrey Magney  
In memory of Wes Maley  
David Maloney AM  
& Erin Flaherty  
Ian Mattinson  
Dr Robert Mitchell  
James & Elsie Moore  
Prof Elizabeth A More AM  
Karen Moses OAM  
Janet Newman  
Jean-Claude Niederer  
& Neil Hendry  
Christopher Nicolosi  
Mr & Mrs Ortis  
Dr Michael Pidcock  
Graham Quinton  
Kenneth & Deborah Raphael  
M Saunders  
Barbara & Bruce Solomon  
Cheri Stevenson, in memory  
of Graham  
Delia Taylor  
Nick & Kate Thomas  
Jane Thornton OAM  
& Peter Thornton  
Dietmar Tucha  
Gillian Turner & Rob Bishop  
Ken Unsworth  
In memory of Robert Veel  
Dr Alla Waldman  
& Mark Azzopardi  
Dr Simon Winder  
Marianna Wong  
Natalie Yamey  
Dr John Yu AC

# THANK YOU

## PRINCIPAL PARTNER



## GOVERNMENT PARTNERS



The Sydney Symphony Orchestra is assisted by the Australian Government through Creative Australia, its principal arts investment and advisory body.

The Sydney Symphony Orchestra is supported by the NSW Government through Create NSW.

## MAJOR PARTNERS



Advisory Partner



Fine Wine Partner

## GOLD PARTNERS



## SILVER PARTNERS



## BRONZE PARTNERS



## INDUSTRY PARTNERS

## FOUNDATIONS



**PATRON** Her Excellency  
The Honourable Margaret Beazley <sup>AC</sup> <sup>KC</sup>

**BOARD**

Geoff Wilson *Chair*  
Andrew Baxter *Deputy Chair*  
Geoff Ainsworth <sup>AM</sup>  
William Barton  
Kees Boersma  
Rosemary Curtin  
Susan Ferrier  
The Hon. AJ Meagher  
Kate Shaw  
Julie Sibraa  
Catherine Webb  
Craig Whitehead

**COUNCIL**

Brian Abel  
Anne Arcus  
Terrey Arcus <sup>AM</sup>  
Christine Bishop  
Dr Rebecca Chin  
Paul Colgan  
John C Conde <sup>AO</sup>  
Catherine Crouch <sup>OAM</sup>  
Ewen Crouch <sup>AM</sup>  
The Hon. John Della Bosca  
Johanna Featherstone  
Hannah Fink  
Erin Flaherty  
Dr Stephen Freiberg  
Dorothy Hoddinott <sup>AC</sup>  
Dr Gary Holmes  
Michelle Anne Johnson  
Dr John Lam-Po-Tang  
Gary Linnane  
Helen Lynch <sup>AM</sup>  
David Maloney <sup>AM</sup>  
Danny May  
Fran Meagher  
Taine Moufarrige  
Dr Eileen Ong  
Dr Anne Reeckmann  
Paul Salteri <sup>AO</sup>  
Sandra Salteri  
Rachel Scanlon  
Juliana Schaeffer  
Ali Smyth  
James Stening  
Russell Van Howe  
Brian White <sup>AO</sup>  
Kathy White  
Rosemary White  
Andrew Wiseman

**HONORARY COUNCIL**

Ita Buttrose <sup>AC</sup> <sup>OBE</sup>  
Yvonne Kenny <sup>AM</sup>  
Wendy McCarthy <sup>AC</sup>  
Dene Olding <sup>AM</sup>  
Leo Schofield <sup>AM</sup>

**MANAGEMENT & STAFF**

Craig Whitehead  
*Chief Executive Officer*  
Jacelyn O’Brien  
*Executive Assistant (Interim)*  
Ben Chapman  
*Head of Government Relations*

**ARTISTIC PLANNING**

Melissa King  
*Director of Artistic Planning*  
Sam Torrens  
*Associate Director –  
Concerts and Programming*  
Andrew Groch  
*Executive Producer*  
Vico Thai  
*Producer Artistic Planning*  
Sarah Thomas  
*Concert Manager*  
Ilmar Leetberg  
*Artist Liaison Manager*

**Library**

Alastair McKean  
*Head of Library*  
Victoria Grant, Mary-Ann Mead  
*Library*

**BUSINESS SERVICES**

Sarah Falzarano  
*Director of Finance*  
Daniela Ramirez  
*Finance Manager*  
Laura Soutter  
*Payroll Manager*  
Jonathan Zaw  
*IT Manager*  
Alex Hong  
*Assistant Accountant*  
Anel Jansen van Vuuren  
*Accounts Payable Officer*

**DEVELOPMENT**

Jennifer Drysdale  
*Director of Development*  
Rachel Shafran  
*Development Manager*  
Benjamin Moh  
*Head of Corporate Relations*  
Sabrina Jelicio  
*Corporate Relations Officer*  
Fleur Griffiths  
*Head of Philanthropy*  
Patricia Laksmono  
*Events Manager*  
Gabriela Postma  
*Philanthropy Officer*  
Alison Eom  
*Philanthropy Coordinator*

**LEARNING & ENGAGEMENT**

John Nolan  
*Director of Learning & Engagement*  
Daniella Garnero  
*Program Manager, Schools & Families*  
Giulian Favrin  
*Program Manager, Artist Development  
& Public Engagement*  
Alice Jarman-Powis  
*Learning & Engagement Coordinator*

**MARKETING**

Charles Buchanan  
*Director of Marketing*  
Alexandra Barlow  
*Head of Communications & Content*  
Craig Abercombie  
*Content Producer*  
Hugh Robertson  
*Editorial Manager*  
Tina Ma  
*Publicity Coordinator*  
Andrea Reitano  
*Head of Growth Marketing*  
Nicola Solomou  
*Senior Marketing Manager*  
Ann He  
*Marketing Manager*  
Laura Dang  
*Marketing Coordinator*  
Amy Zhou  
*Graphic Designer*  
Chris Slavez  
*Digital Marketing Coordinator*  
Lynn McLaughlin  
*Head of Lifecycle Marketing*  
Douglas Emery  
*Senior Marketing Manager & Insights Analyst*

**Customer Relations**

Pim den Dekker  
*Head of Customer Relations*  
Georgia Mulligan  
Jennifer Calacoci  
Meg Chaseling  
*Customer Relations Team Leads*

**OPERATIONS & PRODUCTION**

Kerry-Anne Cook  
*Director of Operations & Production*  
Aeva O’Dea  
*Operations Manager*  
Tom Farmer  
*Production Manager*  
Elissa Seed  
*Production Manager*  
Jacinta Dockrill  
*Production Administrator*  
Shanell Bielawa  
*Production Coordinator*  
Jordan Blackwell, Jess Hughes,  
Rory Knott, Matthew Landi,  
Harvey Lynn, Ella Tomkins  
*Production Assistants*  
Georgia Holmes, Reede Palmer  
*Production Interns*

**ORCHESTRA MANAGEMENT**

Aernout Kerbert  
*Director of Orchestra Management*  
Brighdie Chambers  
*Orchestra Manager*  
Emma Winestone  
*Deputy Orchestra Manager*

**PEOPLE & CULTURE**

Daniel Bushe  
*Director of People & Culture*  
Rosie Marks-Smith  
*Head of Culture & Wellbeing*  
Keanna Mauch  
*People & Culture Advisor*  
Sue Burnet  
*Work Health & Safety Specialist*

*Keep the conversation*

# FLOWING

«SYDNEY»  
«SYMPHONY»  
«ORCHESTRA»

Principal Partner



FLY BETTER

Take a break from your seat and join us in our stylish Onboard Lounge to celebrate 25 years of connecting Sydney to the world. Sip cocktails, enjoy light bites and discover an exclusive vintage on your way to your next destination.

